



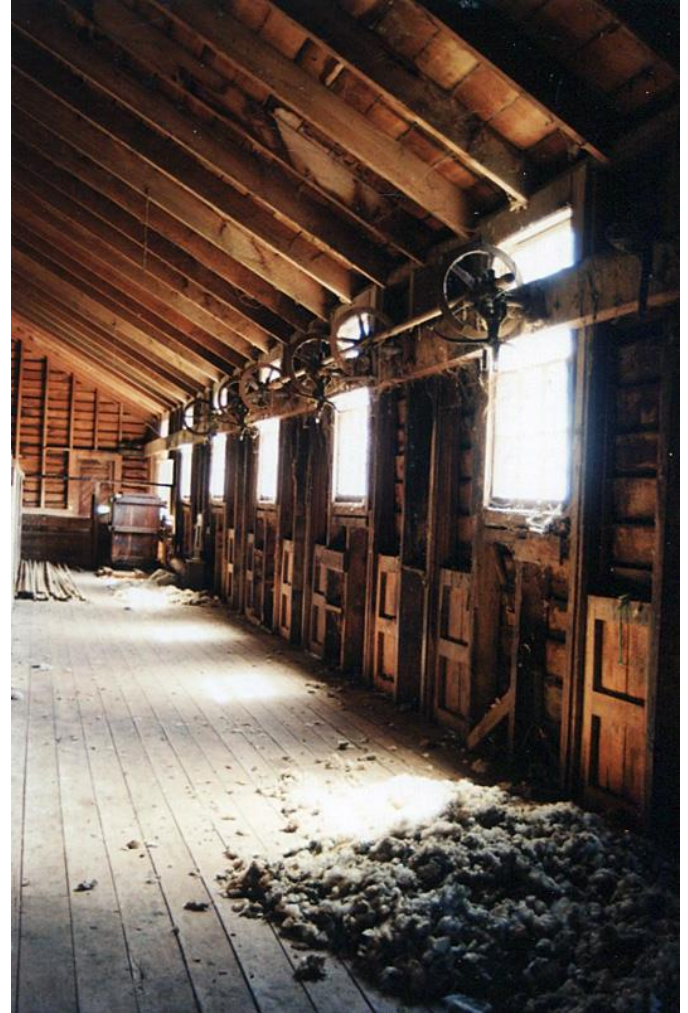
HERITAGE NEW ZEALAND
POUHERE TAONGA

Heritage assessment of Crown land for disposal/transfer

Barbara Rouse

Senior Heritage Policy Advisor, Heritage New Zealand
Heritage Planners' Forum, 29 October 2015

Overview



Heritage New Zealand Pouhere Taonga Act 2014

Purpose of Act

“to promote the

- identification
- protection,
- preservation and
- conservation

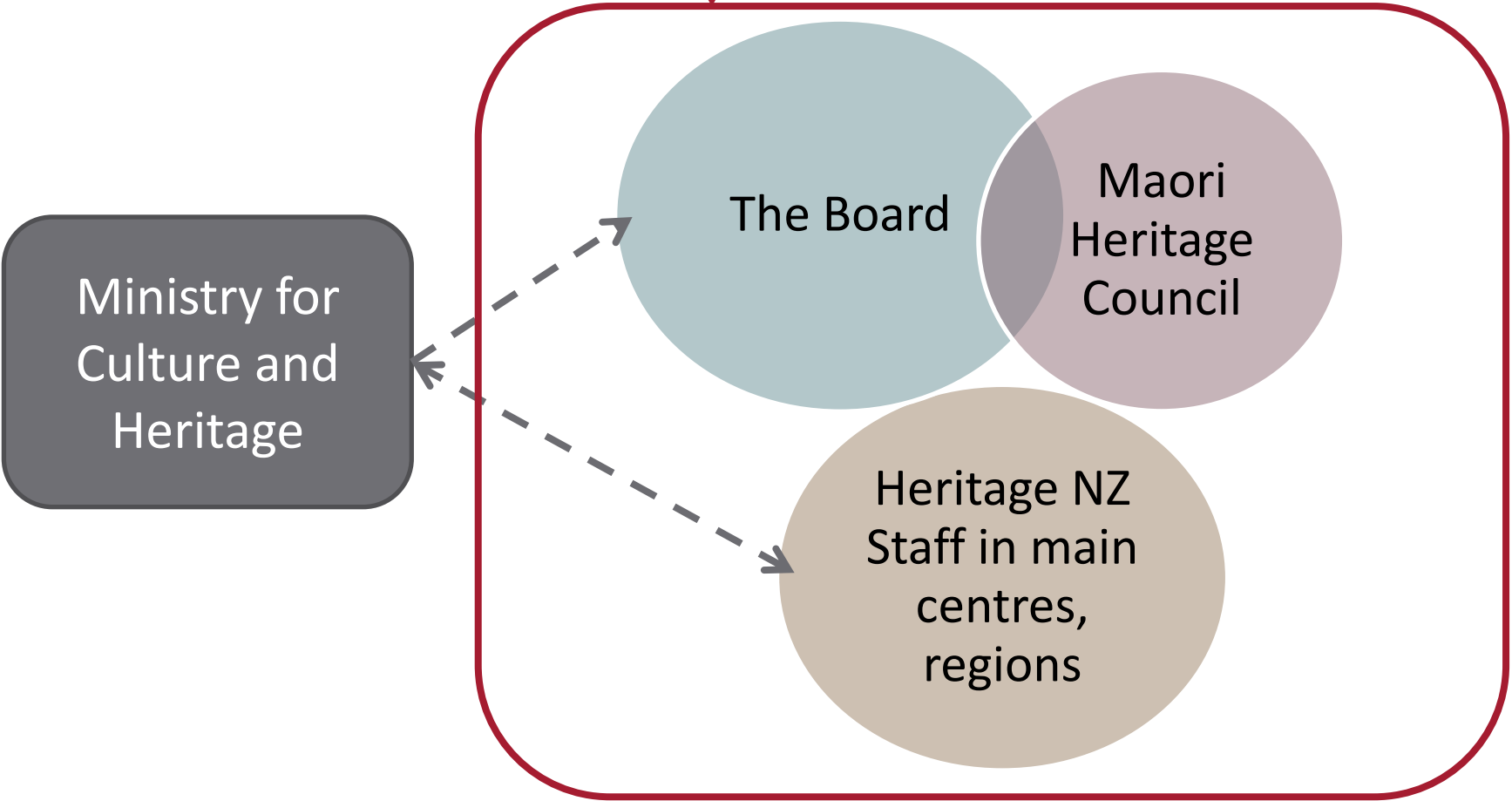
of the historical and cultural heritage of New Zealand”

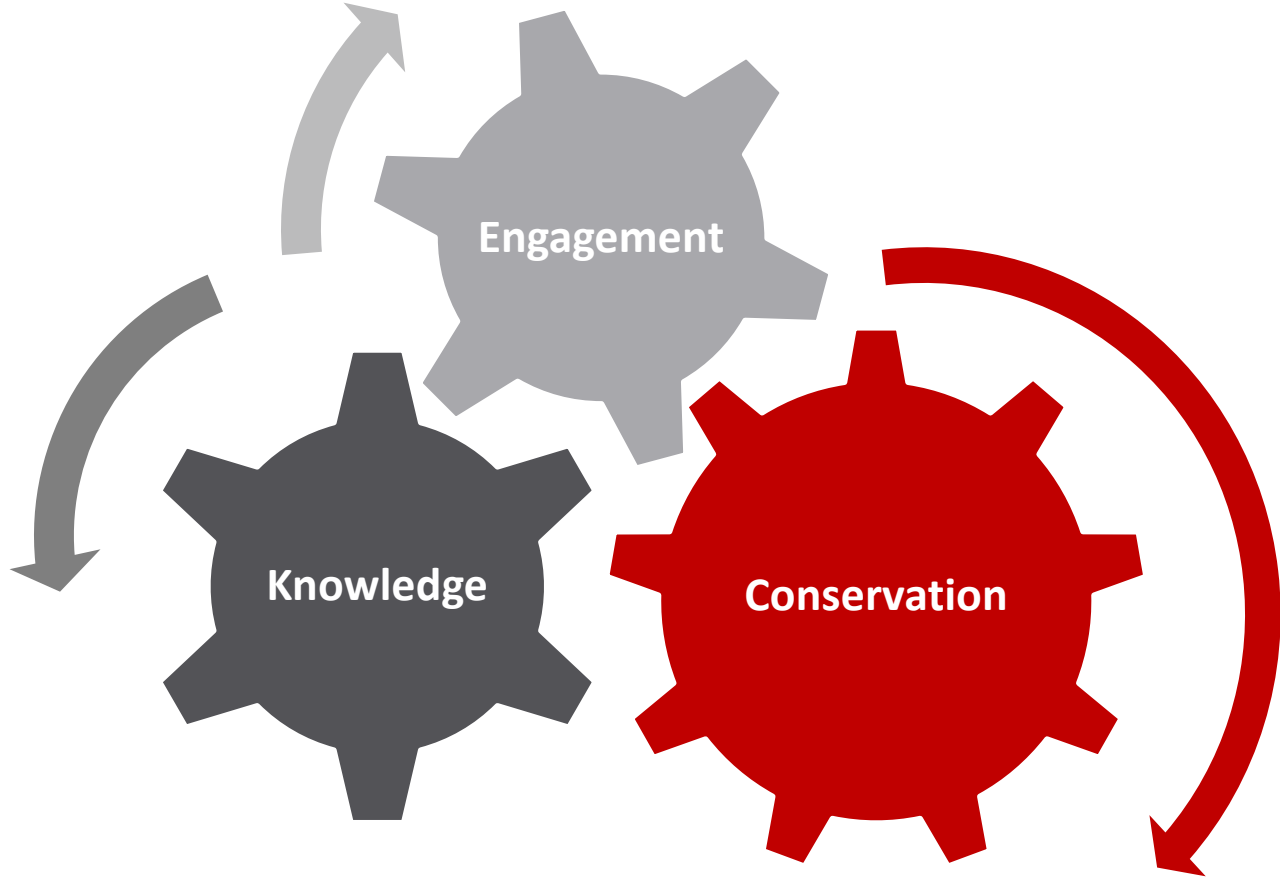


Photo: Rangiriri Historic Reserve, Waikato.
Credit: Heritage New Zealand.

Heritage New Zealand Pouhere Taonga Act 2014

Establishes Heritage New Zealand Pouhere Taonga as a crown entity





Knowledge: the New Zealand Heritage List/Rārangi Kōrero

- To identify and inform the public and owners about NZ heritage places

- To be a source of information for the purposes of the RMA



King Edward Technical
College (former) Category 1
Photo B Rouse HNZPT

Promote heritage conservation



- Advice to owners of historic heritage
- Input to development of RMA plans
- Promote identification of List items in RMA plan schedules
- Input to resource consent applications
- Assistance in conservation of Māori built heritage

Regulate modification and destruction of archaeological sites



Own and manage historic heritage



Mandate for heritage assessment of Crown Land for disposal/transfer

- Process established by Cabinet 2007
- Reviewed & confirmed 2011: “discontinuing could result in the loss of nationally significant heritage”
- Heritage assessments and recommendations for protection to focus on the national interest
- Departments also subject to the Policy for Government Departments’ Management of Historic Heritage (MCH, 2004): ensure in disposing of land that heritage values protected

Assessing heritage values

We use the criteria for entering a place on the List:

- aesthetic
- archaeological
- **architectural**
- cultural, including intangible values
- **historical**
- **scientific**
- **social**
- **technological**
- traditional values

Further significance/value criteria for assigning a Status Cat 1 or 2



Cat 1: Headmaster's House (Former) Timaru
Photo HNZPT

Additional criteria for determining significance

11 additional criteria to determine Category 1 or Category 2 historic places, for example:

- 66(b): the association of the place with events, persons, or ideas of importance in New Zealand history
- 66(f): the potential of the place for public education
- 66(j): the importance of identifying rare types of historic places

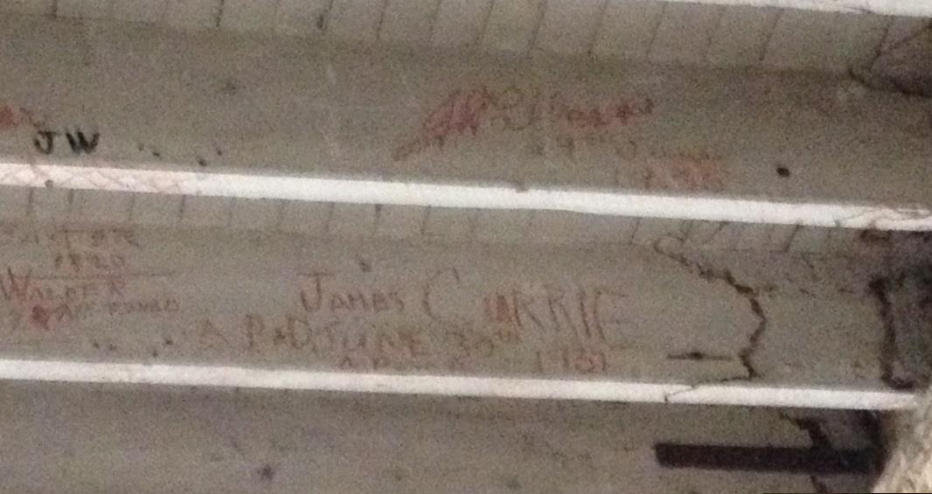
Values associated with educational sites

- Historical –understanding the history of the development of education, technical & agricultural training in NZ
- For example, progression from private adult education and vocational training through to the state operated training facilities – technical colleges, then polytechnics
- Subsequent progression to university status for some polytechnics
- Still some examples of the earliest institutions

Dunedin Athenaeum Library



- Established 1851/1859 - Role in adult literacy – important part of the story of the development of adult education
- The only Athenaeum still functioning as a library



Technical training Dunedin Athenaeum and Mechanics Institute 1870



Vocational

- Dental school, Otago 1907
- Now the Staff Club



Agricultural training - Massey



Photos HNZPT (Peren, Woolshed) and Massey Archive

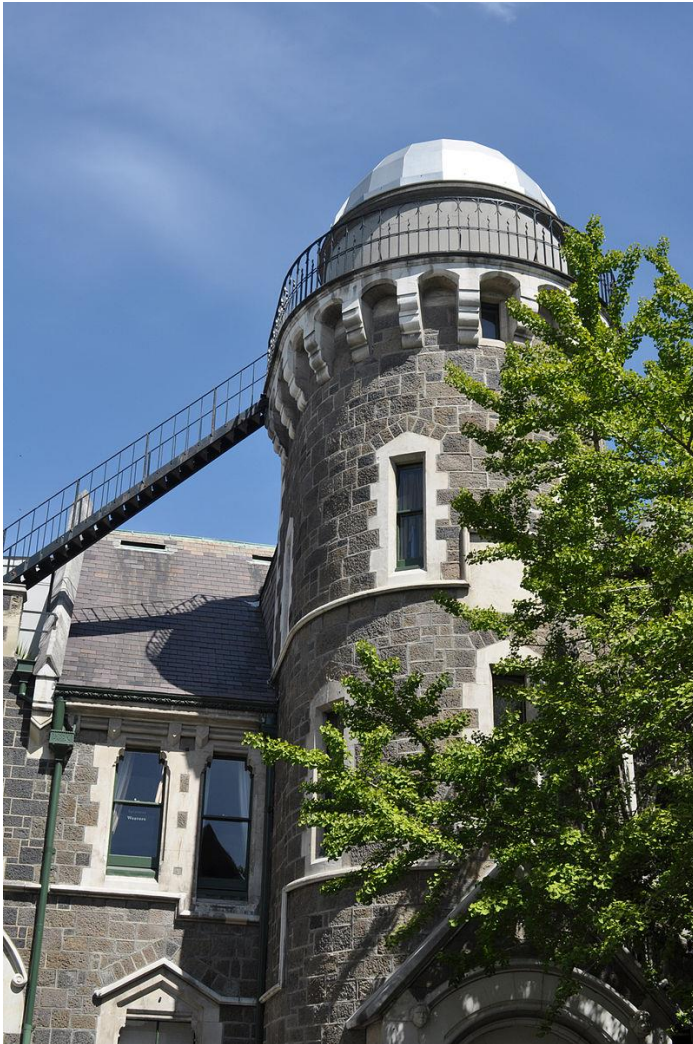
heritage.org.nz

From the old to the new...





- Scientific/technological – site of discoveries and developments, work by important scientists



Source: Wikimedia commons; Heritage NZ (Rutherford House)

heritage.org.nz

Architectural

- Old Arts Building, Auckland – Lippincott
- Modern Movement- Hocken Building, Dunedin – McCoy & Wixon



Buildings telling other stories

- Old Government Buildings Wellington
- Now Victoria University Law School
- Managed by DoC



Options for identification and protection

- Relationship agreement
- Management plan/conservation plan
- Entry on NZ Heritage List
- Adding to district plan schedule
- Covenant
- Management by HNZPT/DOC
- Declaration as archaeological site

New Zealand Heritage List

| ListType | Number of Entries |
|---------------------------|-------------------|
| Historic Area | 126 |
| Historic Place Category 1 | 1003 |
| Historic Place Category 2 | 4428 |
| Wāhi Tapu | 103 |
| Wahi Tapu Area | 62 |
| Total | 5722 |



- **Formal process:** List entries
 - nominated,
 - full **heritage assessment**,
 - notified,
 - **submissions** considered
 - approved by Board or Māori Heritage Council
- Assessed for eligibility and significance

Trout Hatchery, Nelson Photo NZHPT

Historic Areas



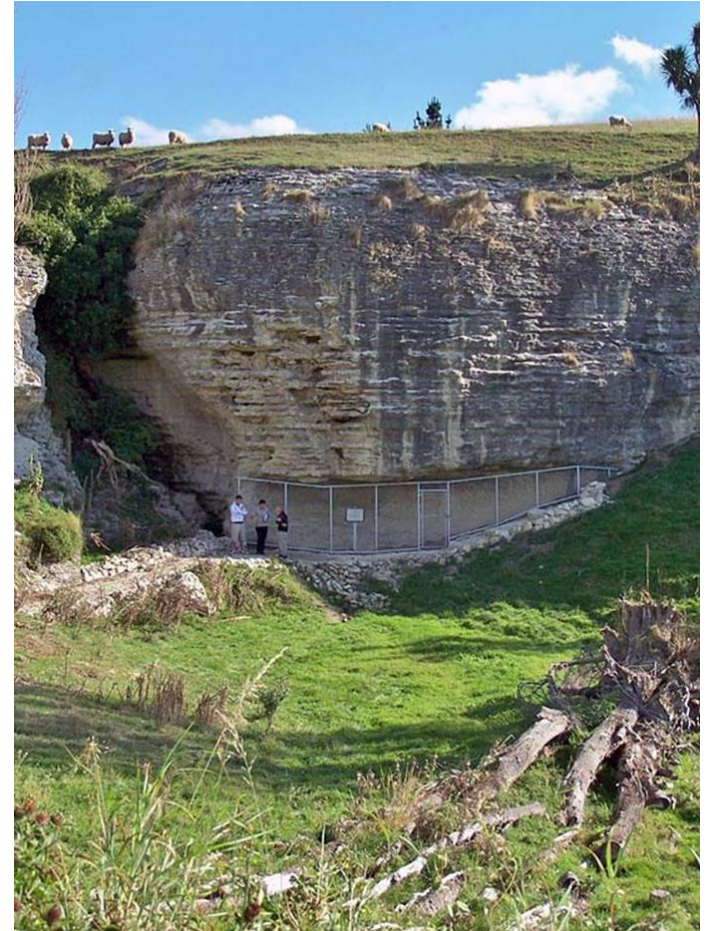
Trafalgar Street/Cathedral precinct
Nelson Image source Te Ara (above
top right) Wiki (left and above)

Māori heritage

Wāhi Tapu - places sacred to Māori in the traditional, spiritual, religious, ritual or mythological sense such as maunga tapu, urupā, funerary sites and punawai

Wāhi Tapu Areas - areas that contain one or more wāhi tapu

Wāhi Tūpuna – NEW - places important to Māori for ancestral significance and associated cultural and traditional values



Te Manunui (great bird), Maungati, Cat 1
Some Māori heritage is entered on List as Category 1 or 2

Entry on the List identifies heritage but does NOT...

- Occur without consultation with property owners and affected parties
- Create regulatory consequences or legal obligations or affect property rights...
- Provide protection under the RMA
- ... so HNZPT also advocates for identification and protection in RMA plans

Protection under the RMA –district and regional plans

- Have objectives and policies aimed at protecting historic heritage from inappropriate subdivision, use and development (RMA 6(f)) as a matter of national importance
- Identify significant heritage in schedules and on maps
- Protect historic heritage with a hierarchy of rules – HNZPT argues for demolition as NCA

Covenants



- Not on List, but in District Plan
- Significant heritage
 - last operating district Courthouse
 - wooden structure unusual 1938-39
- Covenant agreed with owner
- Sold on open market, new owner seeking advice but no controls on interior work

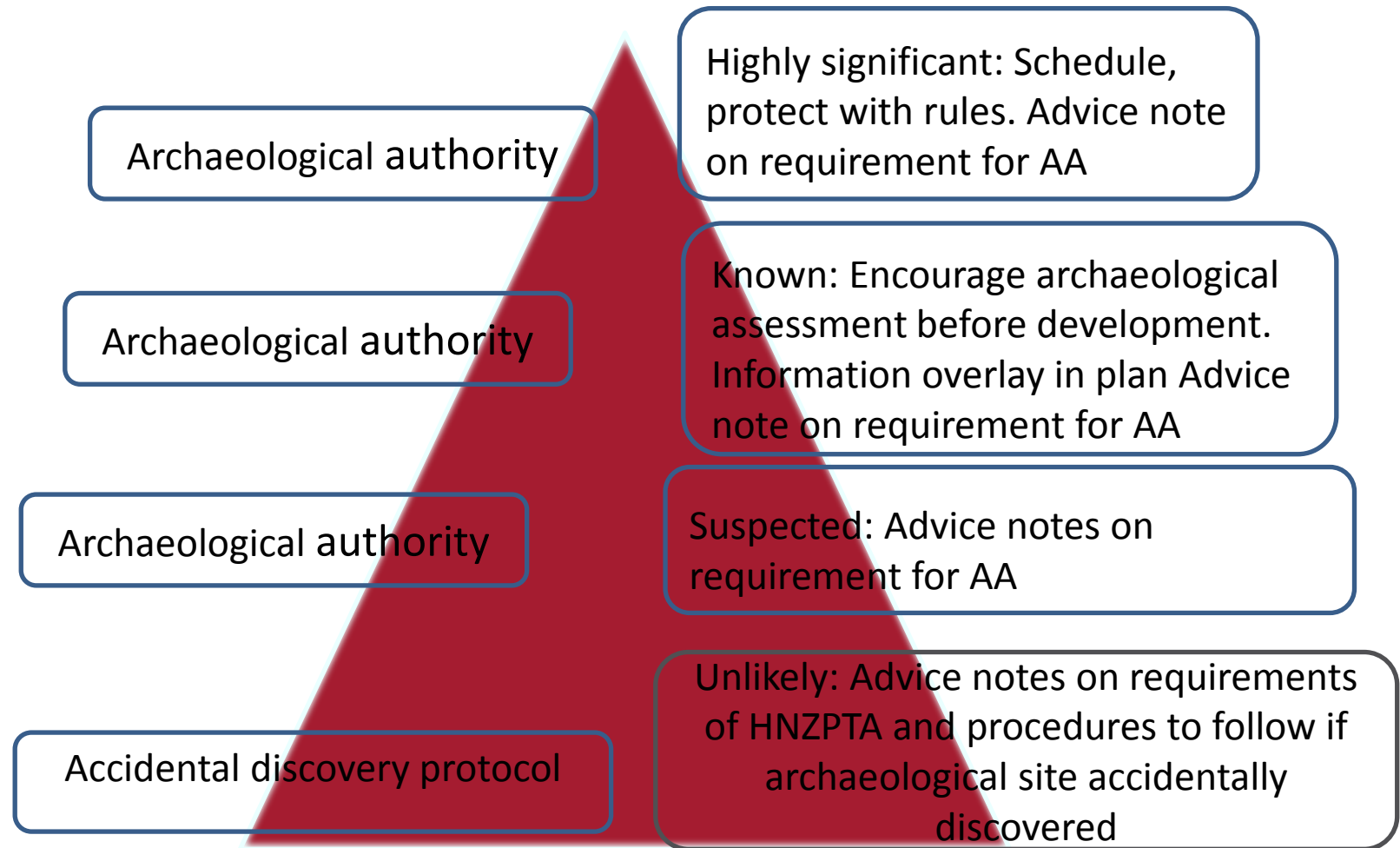


Management by HNZPT/DoC

- Thames School of Mines
- Old Government Buildings Wellington (see above)
- Melanesian Mission (see above)



Protecting archaeological sites



Declarations – Lower Nevis



HERITAGE NEW ZEALAND
POUHERE TAONGA

Determining appropriate mechanisms

Focus on national importance and at risk places:

- **Significance** –association with our heritage, culture and identity.
- **Risk** –risk of loss of significant **heritage values** and the risk to public safety.
- **Impact** – opportunity to enhance heritage outcomes across the wider community
- **Efficiency & Alignment** with HNZPT outcomes and strategic priorities.



Nelson Technical School, photo HNZPT heritage.org.nz

Summing up

- Clear mandate to assess heritage values of Crown land for disposal or transfer
- Assessment based on heritage principles and criteria
- Educational buildings tell an important story about NZ history and development as a nation
- Range of mechanisms available for identification and protection
- Selection of mechanism takes account of significance, national importance





HERITAGE NEW ZEALAND
POUHERE TAONGA

Questions?

[heritage.org.nz](https://www.heritage.org.nz)

Heritage New Zealand Contacts

National Policy Team

Senior Heritage Policy Advisor:

Barbara Rouse

- brouse@heritage.org.nz
- 04 470 8053