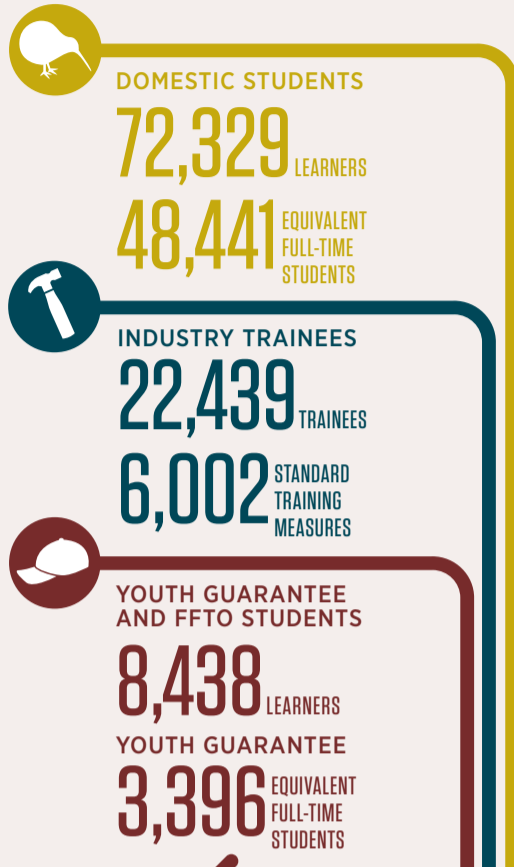


MĀORI IN TERTIARY EDUCATION 2013

PARTICIPATION

TYPE OF ENROLMENT



STUDENT ACHIEVEMENT

		ALL LEVELS		LEVELS 4+	
		MĀORI	NON MĀORI	MĀORI	NON MĀORI
SAC	COURSE COMPLETION	77%	85%	78%	86%
	QUALIFICATION COMPLETION	70%	81%	71%	81%
	STUDENT PROGRESSION L1-4	35%	35%		
INDUSTRY TRAINING	STUDENT RETENTION	66%	76%	68%	78%
	CREDIT ACHIEVEMENT	66%	73%		
	PROGRAMME COMPLETION	65%	76%		
YOUTH GUARANTEE	COURSE COMPLETION	57%	65%		
	QUALIFICATION COMPLETION	48%	56%		

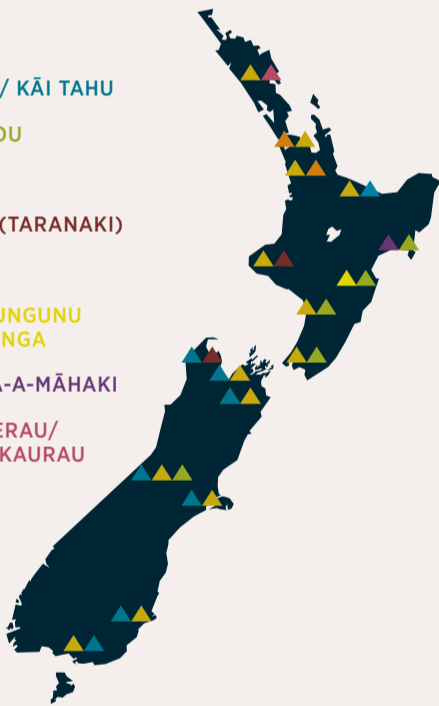
MĀORI DEVELOPMENT

ENROLMENT AND COMPLETION IN MĀORI LANGUAGE TEACHING TE AHO TATAIRANGI: BACHELOR OF TEACHING MĀORI MEDIUM/DIPLOMA IN MĀORI EDUCATION	
PARTICIPATION 36.38 EFTS	COMPLETION 73.54%
RESEARCH DEGREE COMPLETIONS 2012 201	QUALITY SCORE FOR MĀORI KNOWLEDGE AND DEVELOPMENT 3.93 (2006)
5.50% PROPORTION OF TOTAL	4.16 (2012)

WHERE ARE STUDENTS STUDYING?

TOP TWO IWI AFFILIATIONS BY REGION

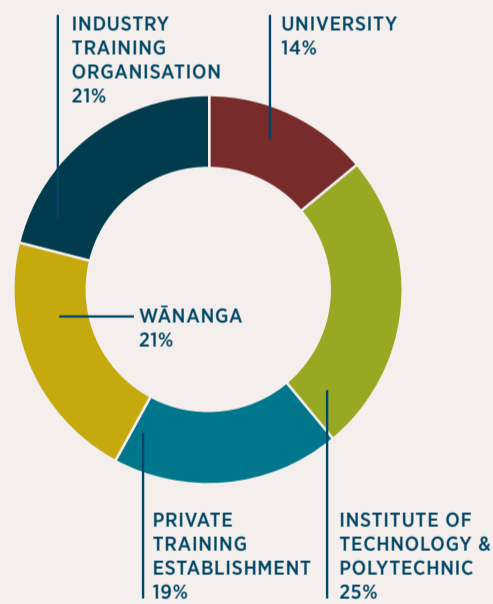
- ▲ NGĀPUHI
- ▲ NGĀI TAHU / KĀI TAHU
- ▲ NGĀTI POROU
- ▲ TAINUI
- ▲ TE ATIWA (TARANAKI)
- ▲ TŪHOE
- ▲ NGĀTI KAHUNGUNU KI HERETAUNGA
- ▲ TE AITANGA-A-MĀHAKI
- ▲ TE TAI TOKERAU/ TĀMAKI-MAKAURAU



BY REGION

EXTRAMURAL	<1%
NORTHLAND	5%
AUCKLAND	20%
WAIKATO	10%
BAY OF PLENTY	11%
GISBORNE	3%
HAWKES BAY	4%
TARANAKI	2%
MANAWATU-WANGANUI	5%
WELLINGTON	11%
TASMAN	<1%
NELSON	1%
MARLBOROUGH	<1%
WEST COAST	<1%
CANTERBURY	5%
OTAGO	3%
SOUTHLAND	1%
AREA OUTSIDE REGION	18%

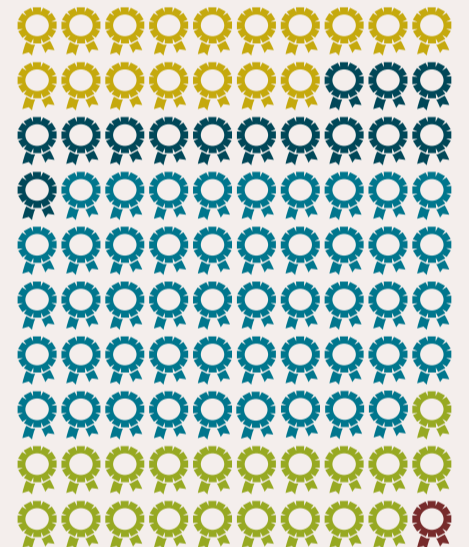
PROVIDER TYPE



These figures include Foundation-Focussed Training Opportunities

WHERE DID STUDENTS COME FROM?

PRIOR EDUCATION LEVEL



NCEA LEVEL 3	17%
NCEA LEVEL 2	14%
NCEA LEVEL 1 & LOWER	48%
OTHER	20%
OVERSEAS	1%

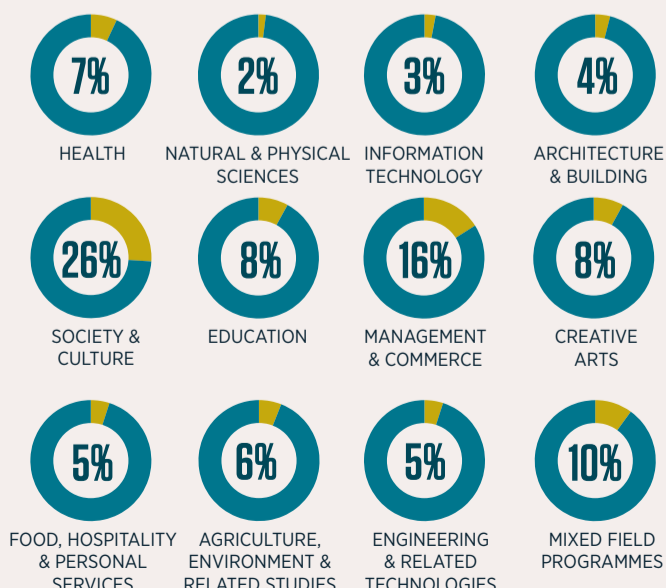
PRIOR ACTIVITY



TERTIARY STUDENT	11%
SECONDARY SCHOOL	17%
OVERSEAS	1%
EMPLOYMENT	47%
NOT IN EMPLOYMENT	24%

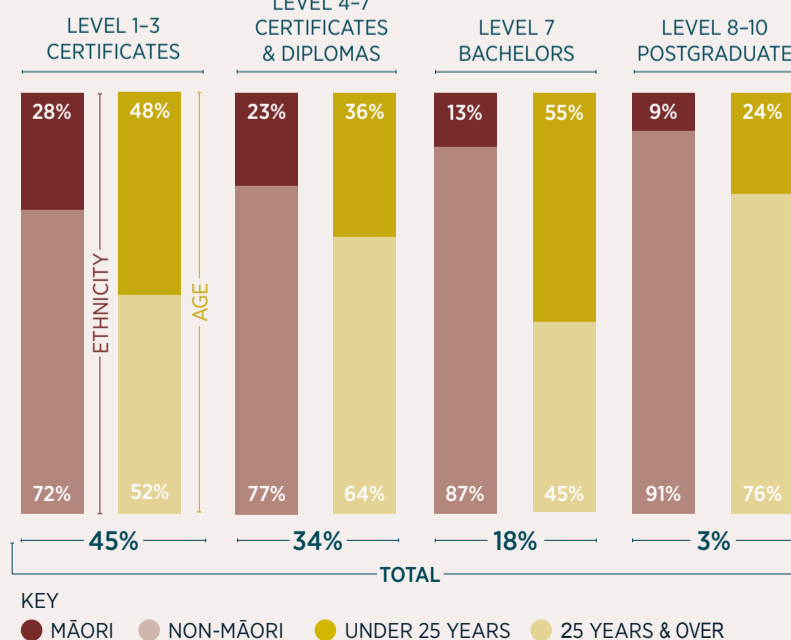
WHAT ARE STUDENTS STUDYING?

SUBJECT



These figures exclude Industry Training

QUALIFICATION LEVEL



KEY
● MĀORI ● NON-MĀORI ● UNDER 25 YEARS ● 25 YEARS & OVER